

15 KTO 1

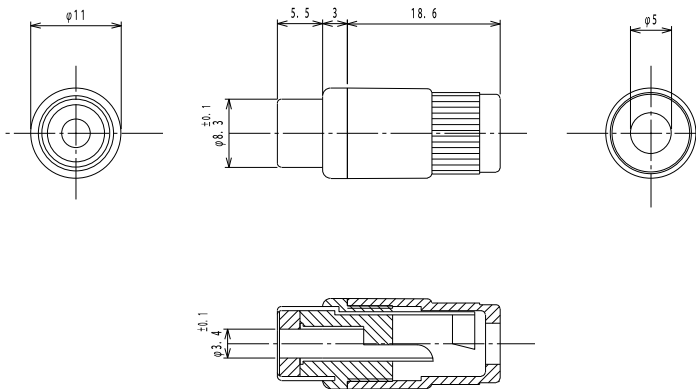
RCA connectors



RCA socket acc. to JEITA RC-5231, straight version, with solder terminals

15

KTO 1



Environmental conditions

Temperature range -20 °C/+70 °C

Materials

Insulating body ABS, HB according to UL94
Inner contact CuZn, nickel-plated
Outer contact steel, nickel-plated
Housing ABS

Mechanical data

Mating cycles ≥ 5000
Insertion force ≤ 30 N
Withdrawal force 1–30 N






Connectable conductors for solder area

Cable diameter 5 mm

Electrical data (at T_{amb} 20 °C)

Contact resistance ≤ 30 m Ω
Rated current 2 A
Rated voltage 34 V AC/DC
Rated impulse voltage 250 V/60 s
Insulation resistance ≥ 100 M Ω

Associated products

Counterparts
 1570 01  1573 01 V  STO 1
 STO 2  XSTO 1

15

KTO 1

Designation	Pole Number	PU (Pieces)	MDQ (Pieces)
KTO 1 ROT (red)	2	100	1000
KTO 1 SCHWARZ (black)	2	100	1000

Packaging:

in bulk, in a cardboard box or a plastic bag