

24

2410 06

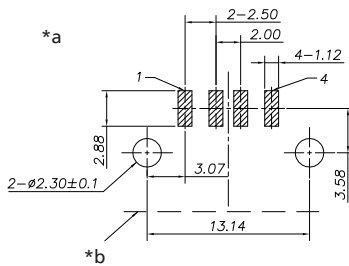
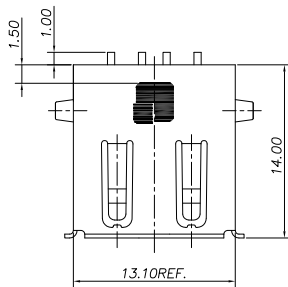
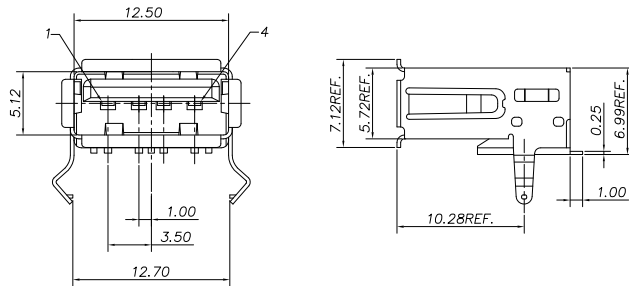
USB and IEEE 1394 connectors



USB 2.0 chassis socket type A, angular version, for printed circuit boards, surface mounting technology (SMT)

State: Obsolete

24 2410 06



- *a printed circuit board layout, components side view
*b printed circuit board edge

Environmental conditions

Temperature range x

Materials

Insulating body LCP GF, V-0 according to UL94
Contact spring Cu alloy, pre-nickel and gold-plated, tin-plated in solder area
Housing Cu alloy, nickel-plated

Mechanical data

Mating cycles 1500
Insertion force ≤ 35 N
Withdrawal force ≥ 10 N

Electrical data (at T_{amb} 20 °C)

Contact resistance ≤ 30 mΩ
Rated current 1 A
Rated voltage 30 V AC
Rated impulse voltage 750 V/60 s
Insulation resistance ≥ 1 GΩ

Associated products

Counterparts
☞ 2410 07 ☞ 2410 08 ☞ 2431
☞ 2480 ☞ 2482

Accessories
☞ 2412 01

24

2410 06

Designation	Pole Number	PU (Pieces)	MDQ (Pieces)
2410 06	4	150	600

Packaging:

in a tray