

15

1553 02

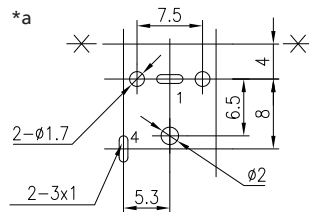
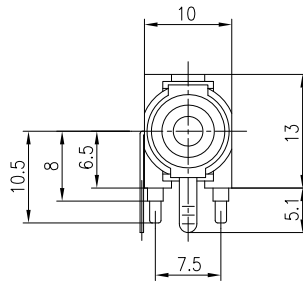
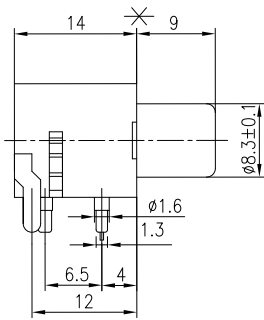
RCA connectors



RCA chassis socket acc. to JEITA RC-5231, angular version,  
for printed circuit boards

15

1553 02



\*a printed circuit board layout, solder side view

#### Environmental conditions

Temperature range -25 °C/+85 °C

#### Materials

Insulating body LCP, V-0 according to UL94  
Inner contact CuZn, pre-copper and tin-plated  
Outer contact CuZn, pre-copper and tin-plated

#### Mechanical data

Mating cycles  $\geq 5000$   
Insertion force  $\leq 30$  N  
Withdrawal force 3–30 N

#### Electrical data (at $T_{amb}$ 20 °C)

Contact resistance  $\leq 30$  m $\Omega$   
Rated current 2 A  
Rated voltage 34 V AC/DC  
Rated impulse voltage 500 V AC RMS/60 s  
Insulation resistance  $\geq 100$  M $\Omega$

#### Associated products

Counterparts  
[1570 01](#)      [1573 01 V](#)      [STO 1](#)  
[STO 2](#)      [XSTO 1](#)

15

1553 02

Designation	Pole Number	PU (Pieces)	MDQ (Pieces)
1553 02 WEISS (white)	2	300	600

**Packaging:**

in bulk, in a cardboard box or a plastic bag