

16 NEB/J 21

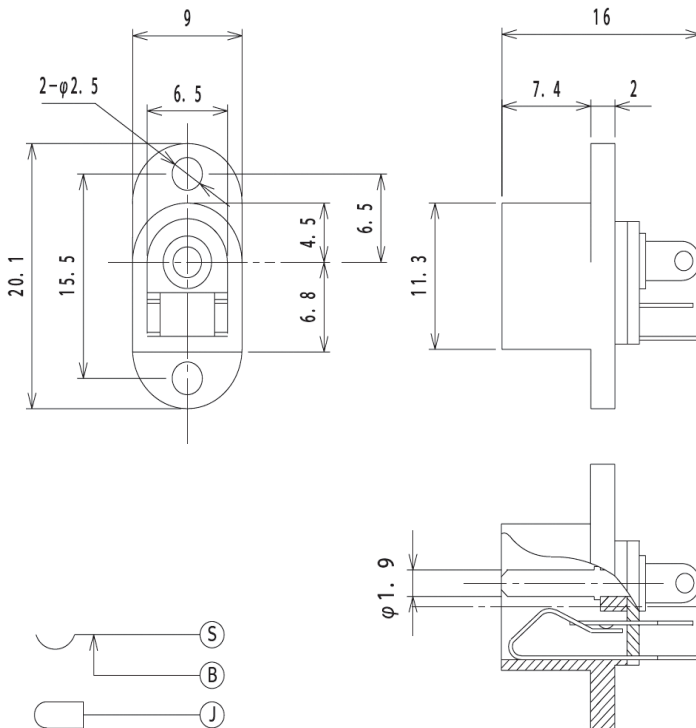
Power supply connectors



Power supply chassis socket, straight version, with fixing flange, break contact and solder eyes

16

NEB/J 21



Environmental conditions

Temperature range -20 °C/+70 °C

Materials

Insulating body POM, HB according to UL94
Contact Cu alloy, nickel-plated/silver-plated
Insulation PBT GF (may be PF in a transitional phase)

Mechanical data

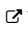





Diameter opening 6.5 mm
Diameter center pin 1.9 mm
Mating cycles 5000¹
Insertion force 4–20 N¹
Withdrawal force 3–15 N¹

¹ measured with a gauge plug

Electrical data (at T_{amb} 20 °C)

Contact resistance ≤ 30 mΩ
Rated current 0.5 A
Rated voltage 12 V DC
Rated impulse voltage 500 V/60 s
Insulation resistance 100 MΩ

Associated products

Counterparts
 1633 02  1633 03  NES/J 21
 NES/J 21 W  NES/J 210  XNES/J 210

16

NEB/J 21

Designation	Pole Number	PU (Pieces)	MDQ (Pieces)
NEB/J 21	2	250	750

Packaging:

in bulk, in a cardboard box or a plastic bag