

15

KLBPS 3

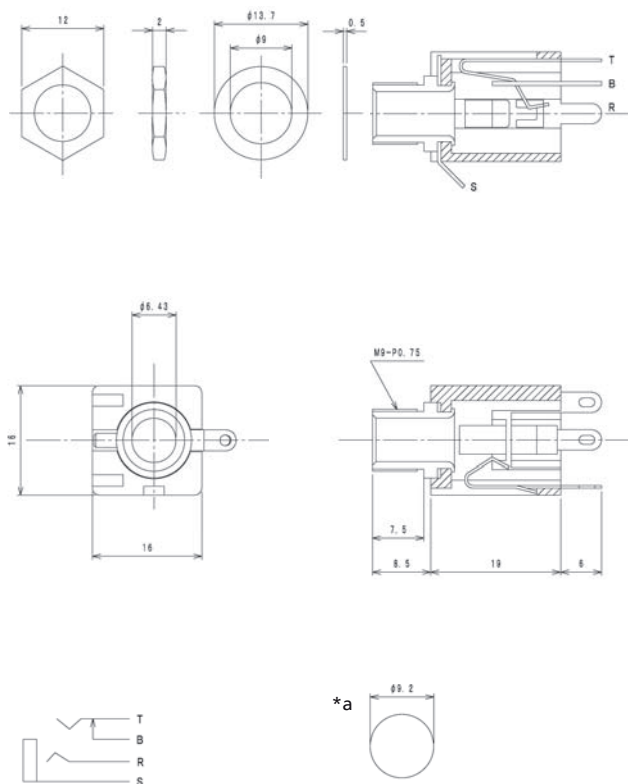
Jack connectors



Jack chassis socket acc. to JIS C 6560 JC63J3Z, 6.35 mm, 3 poles/stereo, with break contact and solder eyes, for back side mounting

15

KLBPS 3



\*a port in mounting plate

#### Environmental conditions

Temperature range -20 °C/+70 °C

#### Materials

Insulating body	PC, V-2 according to UL94
Contact	Cu alloy, nickel-plated/silver-plated
Hexagonal nut	steel, nickel-plated
Washer	steel, nickel-plated

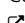
#### Mechanical data

Mating cycles	≥ 10000
Insertion force	5–40 N
Withdrawal force	5–40 N

#### Electrical data (at T<sub>amb</sub> 20 °C)

Contact resistance	≤ 30 mΩ
Rated current	2 A
Rated voltage	34 V AC/DC
Rated impulse voltage	250 V/60 s
Insulation resistance	≥ 50 MΩ

#### Associated products

Counterparts  
 KLS 3

15

KLBPS 3

Designation	Pole Number	PU (Pieces)	MDQ (Pieces)
KLBPS 3	3	50	400

**Packaging:**

in bulk, in a cardboard box or a plastic bag